



This quick start guide covers preparation, use and maintenance for the following models:  
**USRIC-4, USRIC-8 and USRIC-16**

The LogTag® USRIC family consists of 3 fully configurable, single-use USB temperature data loggers. All models can be downloaded to LogTag Analyzer or uploaded to LogTag Online, a cloud storage and sharing platform, and the data viewed from anywhere in the world where you have access to a PC with internet access. The USRIC-8 and USRIC-16 models can also create PDF temperature reports without the need to install proprietary software or hardware at the destination.



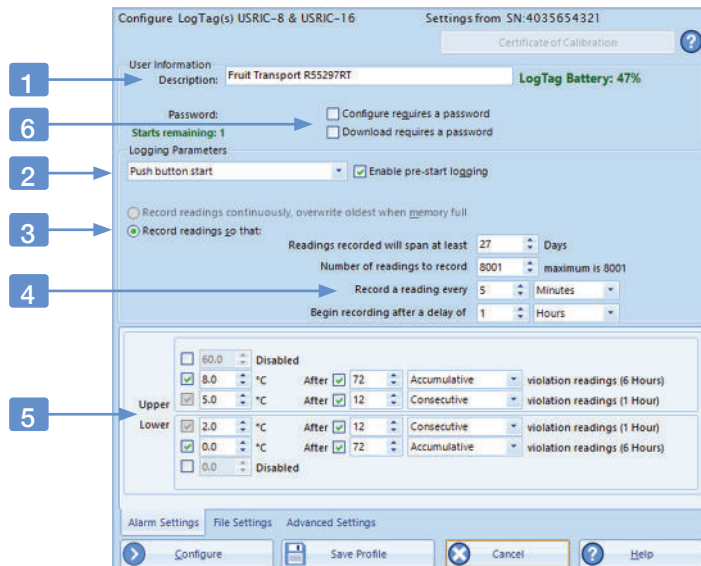
## 1. EQUIPMENT SETUP

Before you can use your LogTag® data logger, it needs to be configured with several parameters. For this, you need a PC running Windows and the free companion software **LogTag® Analyzer** from our website. Browse to the software page at <https://logtagrecorders.com/software/> and navigate to the Downloads page. Once downloaded, install LogTag® Analyzer, then start the program. (For detailed software download and install instructions, please refer to the LogTag® Analyzer User Guide).



## 2. LOGGER CONFIGURATION

Remove the protective cap and plug the LogTag® logger into a USB port on your PC. Start the software and click **LogTag - Configure**, or press **F3**. Following dialogue will be shown:



1. Add a description for the logger or the goods it accompanies
2. Select Date/Time start, or Push button start (with pre-start logging).
3. Specify how long you wish to record for (with optional start delay).
4. Choose the time duration between each reading.
5. Specify the **upper** and **lower** temperature alarms.
6. Optionally, specify a password for next configure or download.

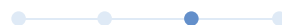
Complete any other entries as required for your trip. You can also set the parameters for your PDF file, and specify if the logger can be manually stopped.

When you have entered all parameters, click **Configure**.

You can remove the logger from the USB port when you see the success message.

LogTag® models differ in specifications. For more information on setting the advanced configuration options of your model please refer to the description in the LogTag® Analyzer User Guide or in the Product User Guide for your specific model.

You are now ready to start and deploy the logger.



## 3. START / INSPECT

Depending on your selection during configuration, the logger may start recording by itself at a specific time, or require a manual start.

We recommend enabling pre-start logging, so data is not lost if the user forgets to press the button. This way, temperatures will be recorded even before the trip is started.

**Date/Time start**

If you configured the logger for a Date/Time start, simply wait until this time has passed. The logger will start recording automatically.

**Push-Button Start**

To start the logger, press and hold the Start/Mark button until the red and green LEDs start flashing, then release.

A start delay can be useful, if you need the logger to acclimatize before the recording of data begins.

While recording, the green LED blinks every 4 seconds if none of the configured alarm conditions have been met. As soon as one of the alarms is triggered, the red alert LED blinks every 4 seconds.

After the LogTag® USRIC started logging, pressing the Mark button will insert an inspection mark in the data recordings, which is displayed when viewing the data in the software or on-line.



## 4. DOWNLOAD / RESULTS

At the end of the trip, several options exist for viewing the recorded data.

[Viewing the on-board PDF](#)

USRIC-8 and USRIC-16 models generate a PDF file as soon as they are plugged into a PC. Refer to the products' user guides for information about what the PDF contains and how to access it. **The files created by the USRIC loggers are not automatically copied to a permanent storage volume on your computer. If you wish to retain the files you need to manually copy them to a location such as your Documents folder.**

[Viewing the data with LogTag® Analyzer](#)

The same software used for configuring the logger can also be used to view recorded data. With the software running, click **LogTag - Download** or press **F4**. You can now inspect the data as a chart, data list or report. At the same time, a file with the data is saved to the **Documents - My LogTag Data** folder on your PC, which you can share with other users.

[Viewing the data with LogTag Xpress](#)

Instead of using LogTag Analyzer, you can use LogTag Xpress to view the data. More information is available from <https://logtagrecorders.com/tx/>

[View the Data with LogTag Online](#)

Continue to read on the next page to see how you can upload the logger's data to LogTag Online so you can view and share your data.

## 5. LOGTAG® ONLINE

LogTag® Xpress and LogTag® Online are perfect companions for uploading data from USRIC loggers, and viewing them in a web browser. LogTag Xpress runs in the background and detects if loggers are plugged into a USB port.

You can set up LogTag® Xpress (and also LogTag® Analyzer) so any files downloaded from a USRIC USB logger are automatically uploaded to LogTag® Online.

Customers can then simply type the logger's serial number into the Logger Transit Data on the LogTag® Online welcome page, and will be able to view the data without the need to create an account

## 6. CALIBRATION

All LogTag® products can be calibrated and adjusted, using dedicated utility software, which is made available to calibration laboratories on request. If you regularly calibrate LogTag® data loggers, and think you qualify, please contact [support@logtagrecorders.com](mailto:support@logtagrecorders.com).

## 7. BATTERIES

When the software indicates that a logger's battery is low, the product has reached the end of its life.

The models listed in this guide each contain a non-replaceable, non-rechargeable Lithium Battery, which must be disposed of in accordance with local regulations.

Do not expose the logger to extreme temperatures as it may lead to the destruction of the battery and may cause injuries.

Keep out of the reach of children.



## 8. WATER INGRESS

Please carefully observe the IP rating for your unit and remember that none of the LogTag® products can be immersed into liquids.

## 9. USB CONNECTOR

Keep the USB connector free from moisture and contamination. Remove the USB cap only when configuring or downloading the logger. It is important that the cap is in place during the trip.

## LIGHT PATTERNS

The following table shows how your LogTag USRIC indicates its operational status via the red and green LEDs.

Signal	Sequence	Occurrence
Wake-up signal	4 alternate flashes of green/red LED's	<ul style="list-style-type: none"> <li>This is displayed after the configuration was successfully applied to the logger</li> <li>It is also shown when a logger is woken from hibernation.</li> </ul>
Start-up signal	16 alternate flashes of green/red LED's	<ul style="list-style-type: none"> <li>This is displayed when the logger starts its recording cycle.</li> </ul>
Mark signal	5 simultaneous flashes of green/red LED's	<ul style="list-style-type: none"> <li>Displayed when pressing START/MARK button while recording to indicate an inspection mark in the software.</li> <li>Displayed directly after the start-up signal following a push button start where a recording delay has been configured. In this instance the start-up signal is repeated when the actual recording begins.</li> </ul>
Logging active, no alert present	Single flash of green LED every 4 seconds	<ul style="list-style-type: none"> <li>Indicates the logger is recording.</li> <li>This is not displayed when pre-start is active and the main logging cycle has not yet started. It is also not displayed when the green LED has been turned off in the configuration screen.</li> </ul>
Logging finished, no alert present	Single flash of green LED every 8 seconds	<ul style="list-style-type: none"> <li>Indicates the logger has finished recording.</li> <li>This is not displayed when the green LED has been turned off in the configuration screen.</li> </ul>
Logging active, alert is present	Single flash of red LED every 4 seconds	<ul style="list-style-type: none"> <li>Displayed when the logger has been detected an alarm condition and the Alert LED has been activated.</li> <li>If the Alert LED has not been activated during configuration, the green LED will flash every 4 or 8 seconds as above.</li> </ul>
Logging finished, alert is present	Single flash of red LED every 8 seconds	<ul style="list-style-type: none"> <li>Indicates the logger has finished recording, and an alarm was triggered during the trip.</li> </ul>
Initiate Stop	14 simultaneous flashes of green/red LED's, followed by rapid flashing	<ul style="list-style-type: none"> <li>This LED sequence appears when the stop sequence is initiated and requires that the STOP button is enabled during configuration of the logger.</li> <li>For the recorder to stop, the button must be released during the rapid flashing.</li> </ul>
Communication	The green LED flashes once a second	<ul style="list-style-type: none"> <li>Shown when plugged into USB. The logger is available for communication with LogTag software. Contents of the mass storage device are not accessible.</li> </ul>
PDF generation	The green LED is permanently on	<ul style="list-style-type: none"> <li>Shown when plugged into USB. The logger is processing the recorded data and will present a PDF shortly, available through its on-board mass storage device.</li> </ul>
Mass Storage Device	The green LED flashes twice a second	<ul style="list-style-type: none"> <li>Shown when plugged into USB. The logger is available for communication with LogTag software. The mass storage device and its contents are also accessible.</li> </ul>
Ready for re-flash	The red LED is on permanently	<ul style="list-style-type: none"> <li>The USRIC is ready to receive new firmware.</li> </ul>

## 10. ACCESSORIES

Several accessories are available for your product, such as waterproof enclosures and wall mount brackets.

Please enquire with your reseller for more details.

## 11. SUPPORT

If at any stage you feel you need further help, please contact your sales partner or visit the LogTag support website at

<http://logtagrecorders.com/support> for assistance.