

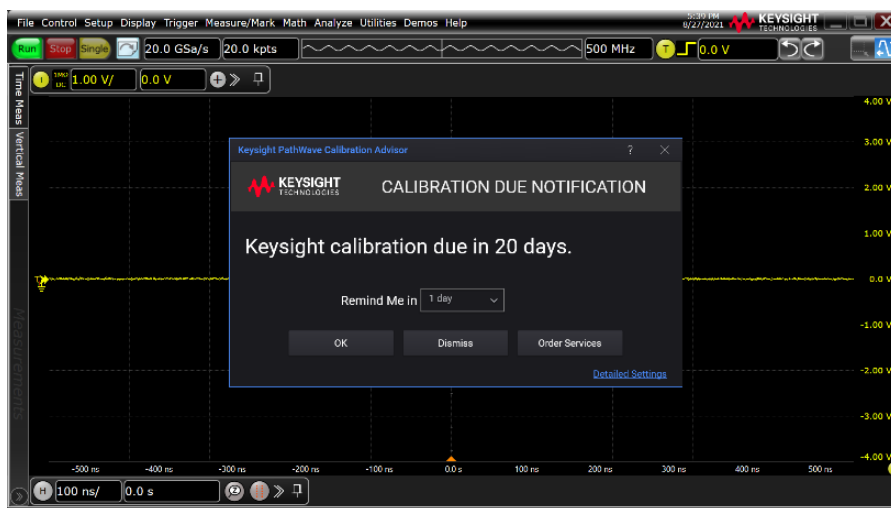
PathWave Calibration Advisor

Optimize setup for your needs

Keysight Instrument Calibration Management

Test instrument calibration is vital to maintain optimal performance and ensure measurements meet specifications just as they did when the instrument was first received. Keysight's PathWave Calibration Advisor (PCA), a built-in software application for Keysight's Windows-based instruments keeps track, and reminds you, of instrument calibration intervals. When combined with KeysightCare Enhanced, a premium support service that includes calibration of choice, you will have the simplest and most efficient way to manage and order calibration services for your instrument.

This configuration guide helps you locate and start using PCA today.



PCA features enable you to:

- Receive calibration reminders
- View calibration status
- Set and manage calibration intervals
- View calibration documents and test reports
- Order Keysight-authorized services
- Refer to built-in online help
- View digital calibration label
- Obtain QR-coded configuration information

Configuring PCA for Calibration Intervals

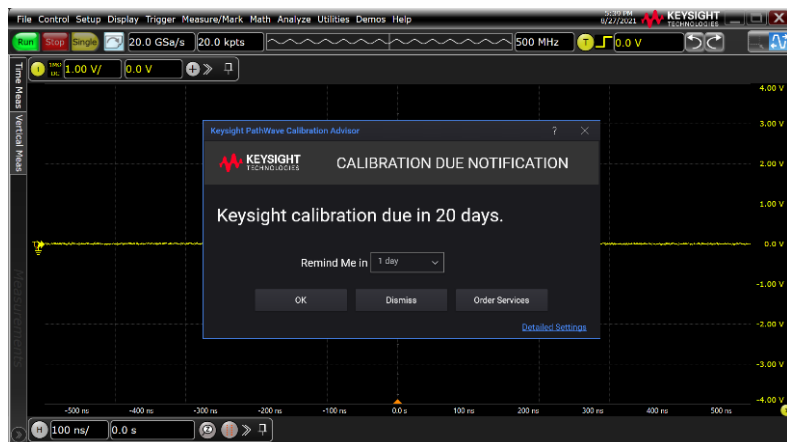
There are two methods for configuring the PCA calibration interval reminders: by using the instruments' front panel, or with SCPI commands.

Configure PCA from your instrument's front panel

To launch PathWave Calibration Advisor or check your instrument's calibration status, locate, and select the PathWave Calibration Advisor from your instrument's front panel menu. The table below provides information for locating the PCA application on your instrument.

Calibration

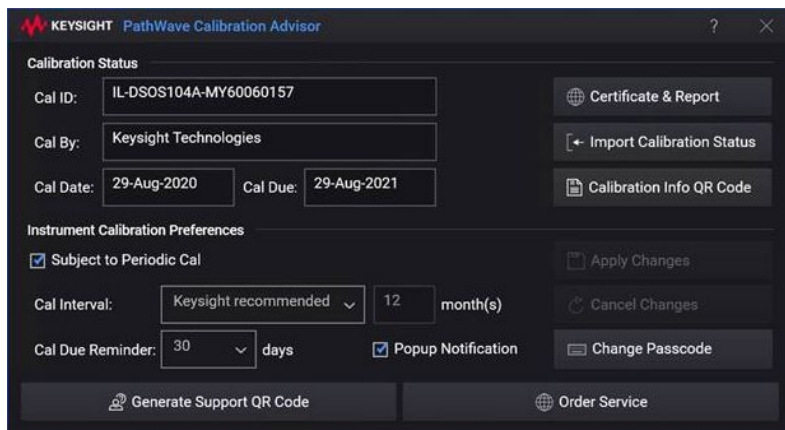
PCA helps you maintain your instrument's optimal performance by enabling you to set and manage periodic calibration settings like calibration intervals. When you choose KeysightCare Enhanced your instrument's calibration of choice is already covered. You can configure PCA to remind you when a calibration is due with a front-panel pop-up notification.



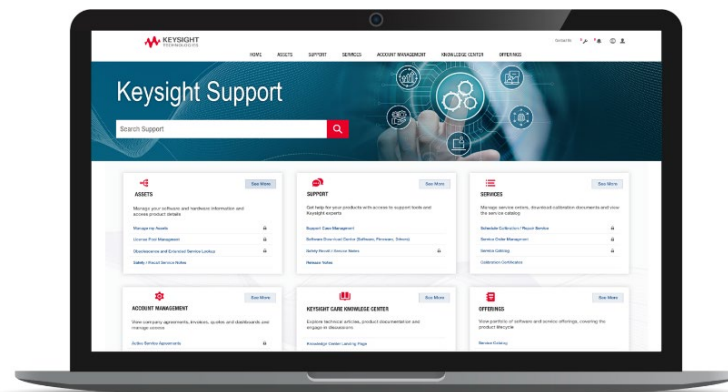
Access your instrument's latest calibration status and information by viewing the electronic calibration label that includes the last calibration date, next calibration due date, and calibration interval. The calibration label eliminates the need to hunt for your instrument's physical calibration sticker.



Import your instrument's calibration status document from the main PCA screen. Or, use PCA to access calibration certificates and test reports with a link to the online Keysight Support Portal (support.keysight.com).



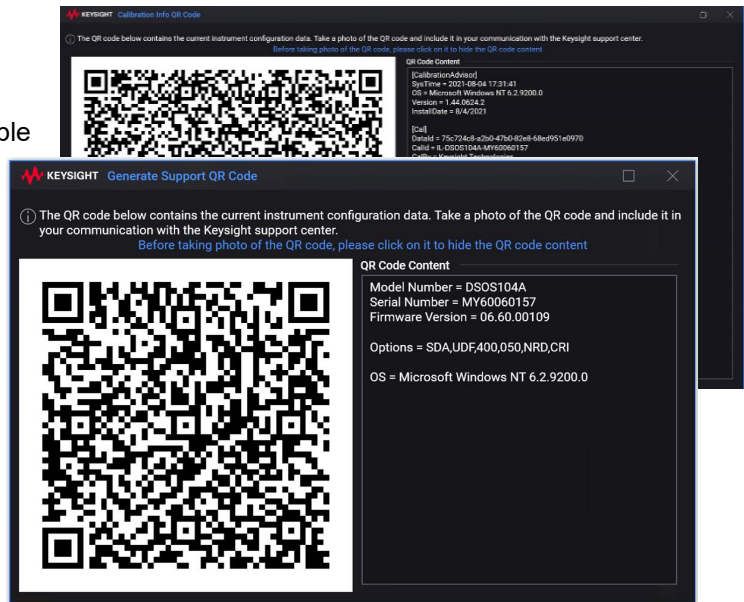
Learn about the value of the [Keysight Support Portal](http://support.keysight.com) at the end of this document, and in this [2-minute video](#).



Unique QR instrument and calibration codes

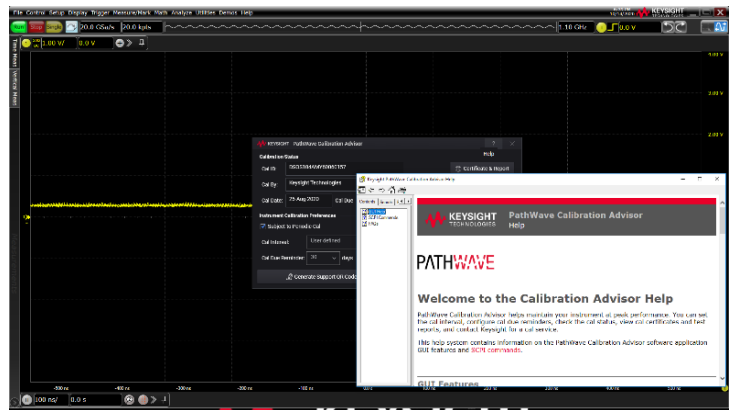
PCA stores your instrument model number, serial number, configuration including selectable options and more which makes it easy for PCA to also generate an all-in-one Support QR code that includes the details you need for easy identification, tracking, and a fast pass for service requests.

Additionally, PCA provides a calibration QR code with your instrument's unique identification and detailed calibration history.



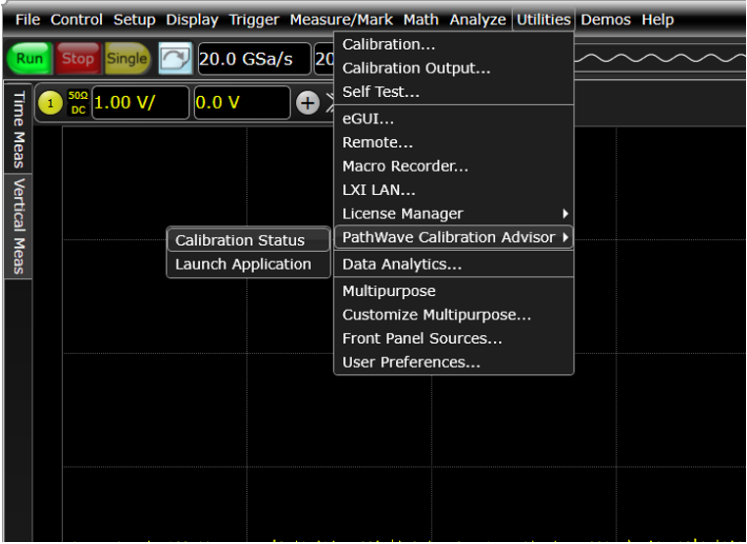
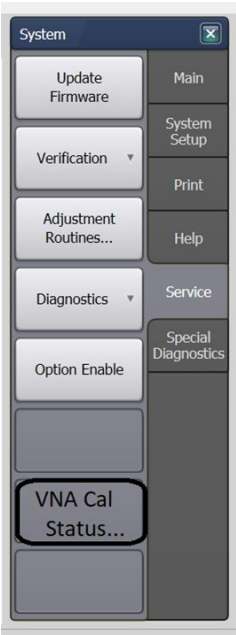
Built-in PathWave Calibration Advisor Help

The built-in help answers your questions on PCA features, how to access information and manage settings.



Easy navigation to PCA on your instrument

The following table provides instrument model numbers that include PCA and describes as well as demonstrates the PCA location on the instrument.

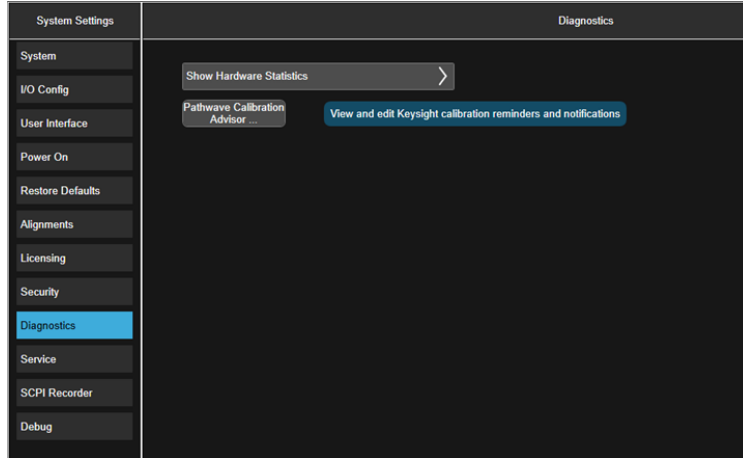
Instruments	Navigation to PCA																											
<p>Infiniium real-time oscilloscopes S/N/Z Series 9000 Series 90000 Series 90000 L/Q/X Series</p> <p>EXR/MXR/UXR Series</p> <p>See the list of PCA enabled oscilloscope model numbers for more details.</p>	 <p>The screenshot shows the top menu bar of the oscilloscope software. The 'Utilities' menu is open, and 'PathWave Calibration Advisor' is highlighted. Other visible options include Calibration..., Calibration Output..., Self Test..., eGUI..., Remote..., Macro Recorder..., LXI LAN..., License Manager, Data Analytics..., Multipurpose, Customize Multipurpose..., Front Panel Sources..., and User Preferences... The background shows a waveform on a grid.</p>																											
<p>Phase noise analyzers</p> <table border="1"> <thead> <tr> <th><u>PNA</u></th> <th><u>PNA-L</u></th> <th><u>PNA-X</u></th> </tr> </thead> <tbody> <tr> <td>N5221B</td> <td>N5231B</td> <td>N5241B</td> </tr> <tr> <td>N5222B</td> <td>N5232B</td> <td>N5242B</td> </tr> <tr> <td>N5224B</td> <td>N5234B</td> <td>N5244B</td> </tr> <tr> <td>N5264B</td> <td>N5235B</td> <td>N5249B</td> </tr> <tr> <td>N5247B</td> <td>N5239B</td> <td></td> </tr> <tr> <td>N5245B</td> <td></td> <td></td> </tr> <tr> <td>N5225B</td> <td></td> <td></td> </tr> <tr> <td>N5227B</td> <td></td> <td></td> </tr> </tbody> </table>	<u>PNA</u>	<u>PNA-L</u>	<u>PNA-X</u>	N5221B	N5231B	N5241B	N5222B	N5232B	N5242B	N5224B	N5234B	N5244B	N5264B	N5235B	N5249B	N5247B	N5239B		N5245B			N5225B			N5227B			 <p>The screenshot shows a 'System' menu with various options. The 'VNA Cal Status...' option is highlighted with a red box. Other options include Update Firmware, Verification, Adjustment Routines..., Diagnostics, Option Enable, Main, System Setup, Print, Help, Service, and Special Diagnostics.</p>
<u>PNA</u>	<u>PNA-L</u>	<u>PNA-X</u>																										
N5221B	N5231B	N5241B																										
N5222B	N5232B	N5242B																										
N5224B	N5234B	N5244B																										
N5264B	N5235B	N5249B																										
N5247B	N5239B																											
N5245B																												
N5225B																												
N5227B																												
<p>Vector network analyzers</p> <p><u>ENA-X</u> E5080B E5081A</p>																												

Signal analyzers X-Series

N9000A/B, N9010A/B, N9020A/B
N9021B, N9030A/B, N9032B,
N9038A/B, N9040B/41B/42B,
N9048B

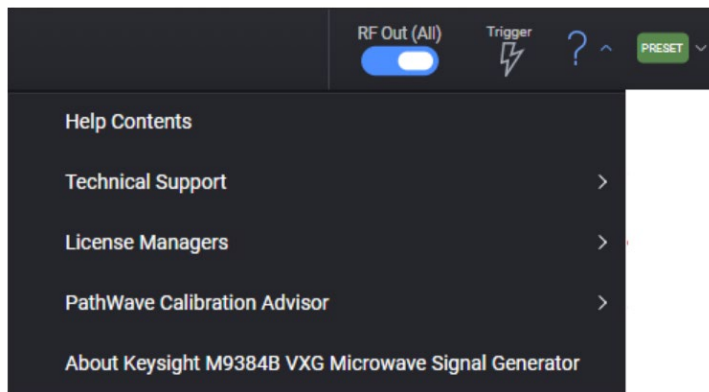
Noise figure analyzers

N8973B/74B/75B/76B



Signal source generator

M9383B, M9384B, M9484C VXG



Signal source analyzer

E5055A SSA-X



Configure PCA using SCPI commands

Standard Commands for Programmable Instruments (SCPI) commands can be used to access and control PCA as an alternative to controlling from the instrument's front panel. The PCA's SCPI commands are most convenient when controlling the instrument remotely. The following SCPI commands enable you to programmatically interact with PCA to set calibration intervals, and notifications, or to change your passcode.

SYSTem: SERvice:MANagement:CALibration:

INFormation

INTerval:

DEFault

VALue

TYPE

NOTification:

ENABle

PASScode:

CHANge

(VALue)

PERiodic:

ENABle

REMinder

PCA Enabled Oscilloscope Model Numbers

MXR/EXR Series

S Series	DSOS054A, MSOS054A, DSOS104A, MSOS104A, DSOS204A, MSOS204A, DSOS254A, MSOS254A, DSOS404A, MSOS404A, DSOS604A, MSOS604A, DSOS804A, MSOS804A
V Series	DSAV084A, DSOV084A, MSOV084A, DSAV134A, DSOV134A, MSOV134A, DSAV164A, DSOV164A, MSOV164A, DSAV204A, DSOV204A, MSOV204A, DSAV254A, DSOV254A, MSOV254A, DSAV334A, DSOV334A, MSOV334A
Z Series	DSAZ204A, DSOZ204A, DSAZ254A, DSOZ254A, DSAZ334A, DSOZ334A, DSAZ504A, DSOZ504A, DSAZ592A, DSOZ592A, DSAZ594A, DSOZ594A, DSAZ632A, DSOZ632A, DSAZ634A, DSOZ634A
EXR Series	EXR104A, EXR254A, EXR108A, EXR258A, EXR054A, EXR204A, EXR058A, EXR208A, EXR404A, EXR408A, EXR604A, EXR608A
MXR Series	MXR054A, MXR058A, MXR104A, MXR108A, MXR204A, MXR208A, MXR254A, MXR258A, MXR404A, MXR408A, MXR604A, MXR608A, MXR608B, MXR408B, MXR208B, MXR258B, MXR108B, MXR058B, MXR604B, MXR404B, MXR204B, MXR254B, MXR104B, MXR054B
UXR Series	UXR0051AP, UXR104A, UXR0134A, UXR0164A, UXR0204A, UXR0252AP, UXR0254A, UXR0254AP, UXR0334A, UXR0402A, UXR0402AP, UXR0404A, UXR0404AP, UXR0502A, UXR0504A, UXR0592A, UXR0592AP, UXR0594A, UXR0594AP, UXR0702A, UXR0702AP, UXR0704A, UXR0704AP, UXR0802A, UXR0804A, UXR1002A, UXR1004A, UXR1102A, UXR1104A, UXR0104B, UXR0134B, UXR0164B, UXR0204B, UXR0252BP, UXR0254B, UXR0254BP, UXR0334B, UXR0402B, UXR0402BP, UXR0404B, UXR0404BP, UXR0502B, UXR0504B, UXR0592B, UXR0592BP, UXR0594B, UXR0594BP, UXR0702B, UXR0702BP, UXR0704B, UXR0704BP, UXR0802B, UXR0804B, UXR1002B, UXR1004B, UXR1102B, UXR1104B, UXR0051BP
9000 Series	DSO9024H, DSO9054H, DSO9064A, MSO9064A, DSO9104A, DSO9104AN, DSO9104H, MSO9104A, DSO9204H, DSO9254A, MSO9254A, DSO9404A, MSO9404A
90000 Series	DSA90254A, DSO90254A, DSA90404A, DSO90404A, DSA90604A, DSO90604A, DSA90804A, DSO90804A, DSA91204A, DSO91204A, DSA91304A, DSO91304A
90000 L Series	DSA93004L, DSO93004L
90000 Q Series	DSAX92004Q, DSOX92004Q, DSAX92504Q, DSOX92504Q, DSAX93304Q, DSOX93304Q, DSAX95004Q, DSOX95004Q, DSAX96204Q, DSOX96204Q
90000 X Series	DSAX91304A, DSOX91304A, MSOX91304A, DSAX91604A, DSOX91604A, MSOX91604A, DSAX92004A, DSOX92004A, MSOX92004A, DSAX92504A, DSOX92504A, MSOX92504A, DSAX92804A, DSOX92804A, MSOX92804A, DSAX93204A, DSOX93204A, MSOX93204A

Keysight Support Portal

Keysight Support Portal stores and maintains your instrument's calibration history including all the downloadable calibration certificates as shown in the Keysight Support Portal windows below.

Sections ▾ Edit Expand ✕

Service ▾

Calibration Type Keysight Cal + Uncertainties	Last Calibration Date 2/2/2021
Calibration Due Date 2/2/2022	Calibration Certificate Number 1-13951104272-1
Factory Calibration Interval 12	Custom Calibration Interval
Special Instructions	Last Reported Condition Received In Tolerance, Completed In Tolerance
Calibration Required Yes	

Sections ▾ Edit Expand ✕

History ▾

Service History

ORDER NUM...	SERVICE TYPE	RECEIVED CONDITI...	RETURNED CONDIT...	CALIBRATION ...	SERVICE DOCUMENTS
446355-1	Factory calibration (or SSU Hub)	NEW_UNIT	IN_TOLERANCE	11/12/2021	Certificate of Calibration
4272-1	Keysight Cal + Uncertainties	IN_TOLERANCE_17025	IN_TOLERANCE_17025	2/2/2022	Calibration Report

Instrument calibration costs are already covered for KeysightCare Enhanced entitled instruments and there is no need for a PO or additional paperwork, as shown on the Keysight Support Portal's Service Order Wizard we page (see image below). Additionally, purchasing multi-year KeysightCare upfront eliminates the need for lengthy and tedious paperwork and yearly requests for maintenance budget.

KEYSIGHT TECHNOLOGIES

Contact Us | Search | 1 | Cart | 5 | Notifications | Profile

HOME ASSETS SUPPORT SERVICES ACCOUNT MANAGEMENT KNOWLEDGE CENTER KEYSIGHT OFFERINGS

SERVICE ORDER WIZARD

SERVICE TYPE SHIPPING METHODS RECEIVER DETAILS BUDGETARY QUOTE

Product Image(s) + Add Item Clear Cart KEYSIGHTCARE → Next Step

Selected Assets

	High-Performance BERT Module, 32Gb/s Front End, 2-slot AXIe Model Number: M8062A Serial Number: MY57700106 Manufacturer: Keysight Technologies Location: SAN DIEGO, US Asset #: UC0104304	Service Request(s): Keysight Calibration Price: US\$-1456.00 You are covered Coverage: 1-14502685867	
--	-----------------------------------------------------------------------------------------------------------------------------------------------------------------------------------------------------------------	---------------------------------------------------------------------------------------------------------------------------------	--

[Upload CSV](#) Service Request Bulk Upload

Prices provided are for reference only and are subject to change without notice. The unit may be serviced overseas if local capabilities are unavailable. Taxes and shipping/handling charges are not included unless otherwise noted. Currency depends on the country selected in My Profile.

© 2000-2022 Keysight Technologies | [Quick Links](#) | [Resources](#) | [Connect](#) | [Privacy](#) [Terms](#)

Product Availability

The PathWave Calibration Advisor will be updated as more products are PCA enabled.

Conclusion

Keep track of instrument calibration intervals with your instrument's built-in PCA software and make measurements with confidence. PCA enables easy instrument maintenance with reliable information storage and recall and, when combined with KeysightCare Enhanced, provides the simplest and most efficient way to manage and order calibration services.

For questions on PathWave Calibration Advisor, you can contact [Keysight's Technical support](#) team and click on "Visit Keysight Product Support".



Experience the Enhanced level of service, including technical support, and committed repair and calibration turnaround times, to help you stay on schedule, accelerate test, ensure precision, and optimize uptime.

[KeysightCare Enhanced](#) provides 2-, 3-, and 5-year plans that include a calibration service of choice with a 5-day committed turnaround time and additional benefits of technical support response in 2 business hours, and repair coverage, if needed, with a 7-day instrument repair turnaround time. Our calibration services ensure your test system performs to specification and meets local and global standards.

Get better test results. Simply.

Keysight enables innovators to push the boundaries of engineering by quickly solving design, emulation, and test challenges to create the best product experiences. Start your innovation journey at www.keysight.com.



This information is subject to change without notice. © Keysight Technologies, 2021 – 2023, Published in USA, October 20, 2023, 3121-1429.EN