

Type 1032 Sanitary Pressure Gauge



FEATURES

- **Plus! Performance available on 2½", 3½", 4½" gauges, liquid filled performance in a dry case gauge.**
- **All-welded 316 stainless steel Bourdon tube**
- **Welded 316L stainless steel diaphragm and seal housing**
- **USP grade glycerin (99.5% pure, system fill) standard**
- **3A compliance to standard 74-02**
- **300 series stainless steel case & ring**
- **Electropolished diaphragm & housing**
- **Dry and liquid filled gauge versions**
- **Weatherproof and hermetically sealed versions**
- **External Easy Zero™ adjust on 3½" dials**

Ashcroft Type 1032 sanitary pressure gauges have specifically been designed to meet the need for sanitary type pressure gauges in the pharmaceutical, bio-tech, filtration and food and dairy markets. With a quick connect clamp and diaphragm surface finish that is electropolished to 12-20RA these instruments are also suitable for use in breweries, wineries and citrus juice production plants. Available in dial sizes from 2" thru 4½" and Tri-Clamp type connections of ¾" thru 2", Ashcroft's selection of sanitary pressure gauges is unsurpassed.

To meet the needs of the markets served all Ashcroft sanitary gauges, with polysulfone window, can be autoclaved or sterilized to temperatures of 300°F (149°C) and can be cleaned or steamed in place. Ashcroft Type 1032 sanitary gauges with dial sizes of 2½" and 3½" are furnished standard with the patented *PowerFlex™* movement. Since the *PowerFlex™* movement is suspended from the Bourdon tube, it resists the effects of pulsation and vibration, a primary cause for gauge failure.

SPECIFICATIONS

- Dial Size:** 2", 2½", 3½", 4½"
- Accuracy:** 2": 3% upscale, up to 5% downscale⁽¹⁾
2½" 3½" 4½": 1.5% F.S. for pressure ranges 100 psi and above. 2.0% F.S. for vacuum compound and ranges below 100 psi.
- Case & Ring Material:** 300 series stainless steel
- Ring Type:** 2": Stainless steel, push-in
2½" 3½" 4½": Bayonet, removable
- Bourdon Tube and Socket Material:** 316L stainless steel
- Diaphragm Material & Surface Finish:** 316 stainless steel, 12 to 20RA electropolished
- Process Connection:** 2": ¾" Tri-Clamp
2½" 3½": 1½" or 2" Tri-Clamp
4½": 2" Tri-Clamp only
- Connection Location:** 2": Lower
2½" 3½" 4½": Lower or back
- System Fill:** USP food grade glycerin
- Window Material:** 2": Glass
2½" 3½": Polycarbonate⁽²⁾
4½": Glass
- Pointer:** 2": Black-painted aluminum, non-adjustable
2½": Black-painted aluminum, adjustable
3½": Black-painted aluminum with ext. adjust
4½": Black-painted aluminum, adjustable
- Dial:** White with black markings
- Movement:** 2", 2½" 3½": 300 series stainless steel
4½": 400 series stainless steel
- Agency Approvals:** 3A compliance to sanitary standard 74-02
- Ranges:** 2": 30# thru 600#, inc. compound & vacuum
2½" 3½" 4½": 15# thru 1000#, including compound & vacuum
- Clean or Steam in Place:** (CIP or SIP):
Temperature limit of 300°F (149°C)
- Autoclave or Sterilize:** Temperature limit of 300°F (149°C)

(1) Gasket material and clamp torque tightness may effect gauge accuracy.

(2) We recommend a polysulfone window for autoclave/sterilization. Specify the XPS variation.

HOW TO ORDER (Typical Example)

25 1032 S (L) 15 L X 100#

Dial Size: 2" 2½" 3½" 4½" _____

Type: 1032, 316 stainless steel tube/socket _____

Diaphragm: 316L stainless steel _____

Liquid-Filled Case (optional) _____

Process Connection: ¾" (75), 1½" (15), 2" (20) Tri-Clamp® _____

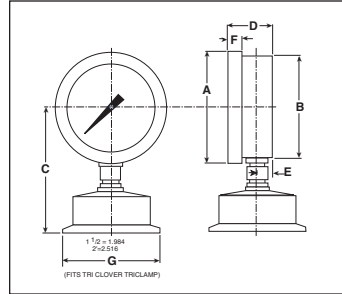
Connection Location: lower (L), back (B) _____

Optional Features _____

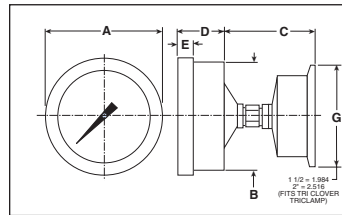
Pressure Range: 100 psi _____

Type 1032 Sanitary Pressure Gauge

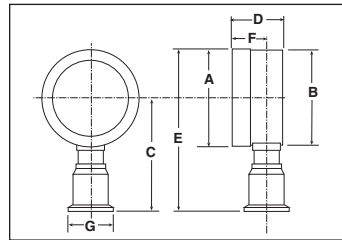
DIMENSIONS



Dial Size	A	B	C	D	E	F	G	
							1½	2
2½" mm	27/8 (73)	22 ¹ / ₃₂ (67)	3 ¹ / ₁₆ (78)	1 ⁵ / ₃₂ (29)	1 ³ / ₃₂ (10)	1 ³ / ₃₂ (10)	2 (51)	2.5 (64)
3½" mm	3 ³¹ / ₃₂ (101)	3 ¹⁹ / ₃₂ (91)	3 ⁹ / ₁₆ (90)	1 ⁷ / ₃₂ (31)	1 ³ / ₃₂ (10)	1 ⁵ / ₃₂ (12)	2 (51)	2.5 (64)
4½" mm	5 ³ / ₁₆ (132)	4 ⁹ / ₁₆ (116)	4 ¹⁵ / ₃₂ (113)	2 ¹ / ₁₆ (52)	1 ⁵ / ₁₆ (24)	1 ⁵ / ₃₂ (12)	2 (51)	2.5 (64)



Dial Size	A	B	C	D	E	G	
						1½	2
2½" mm	27/8 (73)	22 ¹ / ₃₂ (67)	2 (51)	1 ³ / ₁₆ (30)	1 ³ / ₃₂ (10)	2 (51)	2.5 (64)
3½" mm	3 ³¹ / ₃₂ (101)	3 ¹⁹ / ₃₂ (91)	2 (51)	1 ³ / ₁₆ (30)	1 ⁵ / ₃₂ (12)	2 (51)	2.5 (64)



Dial Size	A	B	C	D	E	F	G
2" mm	2 ³ / ₃₂ (53)	2 ¹ / ₃₂ (52)	2 ⁷ / ₁₆ (62)	1 ¹ / ₁₆ (27)	3 ²⁷ / ₃₂ (98)	1 ¹ / ₁₆ (18)	1 (25)

STANDARD PRESSURE RANGES

Pressure				
psi	Figure int.		Minor grad.	
0/15	1		0.2	
0/30	5		0.5	
0/60	5		1	
0/100	10		1	
0/160	20		2	
0/200	20		2	
0/300	30		5	
0/400	50		5	
0/600	50		10	
0/800	100		10	
0/1000*	100		10	
Compound				
	Figure int.		Minor grad.	
	in. Hg	psi	in. Hg	psi
30" Hg/15 psi	5	3	1	0.5
30" Hg/30 psi	10	5	1	1
30" Hg/60 psi	10	10	2	1
30" Hg/100 psi	10	10	2	1

*Requires high pressure type clamp.

METRIC PRESSURE RANGES

Pressure							
kg/cm ² (kilograms per sq. centimeter)	bar	Figure interval	Minor graduation	kPa (kilopascal)	Figure interval	Minor graduation	psi outer scale of dual range*
0/1	0/1	0.1	0.01	0/100	10	1	0/14
0/1.6	0/1.6	0.2	0.02	0/160	20	2	0/22
0/2.5	0/2.5	0.5	0.05	0/250	50	5	0/35
0/4	0/4	0.5	0.05	0/400	50	5	0/55
0/6	0/6	0.5	0.1	0/600	50	10	0/85
0/10	0/10	1	0.1	0/1000	100	10	0/140
0/16	0/16	2	0.2	0/1600	200	20	0/220
0/25	0/25	5	0.5	0/2500	500	50	0/350
0/40	0/40	5	0.5	0/4000	500	50	0/550
0/60	0/60	5	1	0/6000	500	100	0/850
Vacuum							
-1/0	-1/0	0.1	0.01	-100/0	10	1	30" Hg
Compound							
-1/0/1.5	-1/0/1.5	0.05	0.05	-100/0/150	50	5	30" Hg/0/20
-1/0/3	-1/0/3	0.05	0.05	-100/0/300	50	5	30" Hg/0/40
-1/0/5	-1/0/5	0.5	0.1	-100/0/500	50	10	30" Hg/0/70
-1/0/9	-1/0/9	1	0.1	-100/0/900	100	10	30" Hg/0/125

▶ Visit us at Transcat.com!

35 Vantage Point Drive // Rochester, NY 14624 // Call 1.800.800.5001

ISO 9001
REGISTERED FIRM